



Ballast Water Management Technology  
A CALGON CARBON COMPANY

*Hanjin's Subic shipyard in the Philippines selected the Hyde GUARDIAN system for four large container vessels built for Ciner Ship Management.*



**Vessel Type:** Container  
**Ballast Pump Capacity:** 1250 m<sup>3</sup>/hr  
**System Model:** HG1250G

---

## THE CHALLENGE

New construction projects can often be better managed, planned, and executed as we are starting with a blank slate. Of course, shipbuilders have enough things to worry about and the ballast water treatment system often takes a back seat.

---

## THE SOLUTION

Hyde Marine offers a skid mounted assembly that minimizes the installation burden for the yard personnel. All major mechanical components are installed on a single base frame and piping and wiring between those components can be done in advance. This time and effort is expended by Hyde Marine and not by shipyard personnel who can focus on critical aspects of the vessel construction.

---

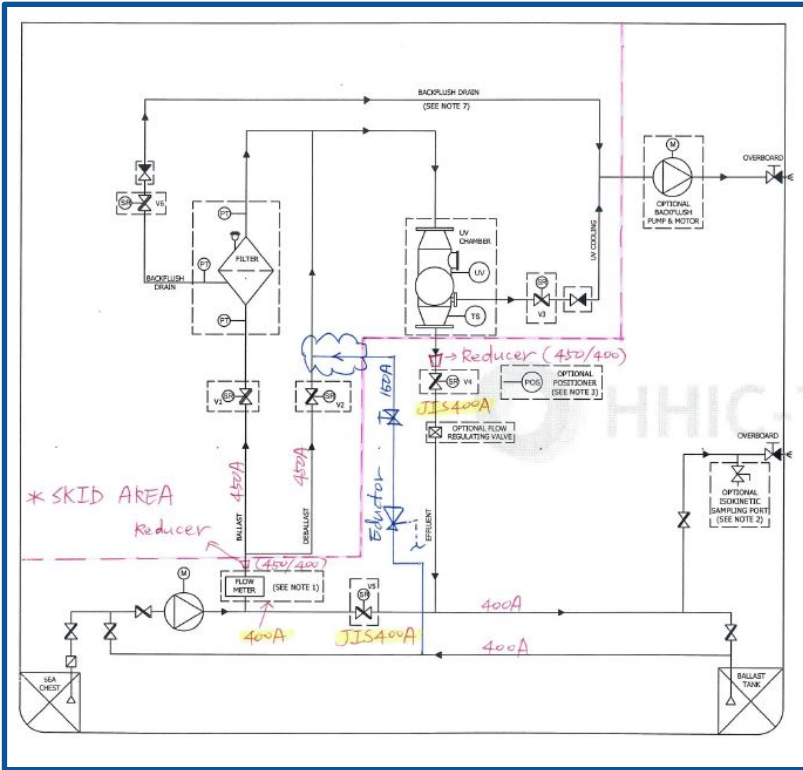
## THE INSTALLATION

With the skid assembly dropped in place and welded to the vessel support structure, the yard only had to furnish piping to the inlet, outlet and drain connections of the system. Once that was done, electrical connections were made and, in a heartbeat, the system installation was complete!

---

## THE SUPPORT

This was one of four vessels being built at the yard and Hyde Marine had support onsite for the later stages of the build. Our commissioning technician was continually moving among the four vessels as installation and commissioning procedures were underway, ensuring yard personnel had all necessary support and was able to deliver a fleet of fully operational vessels to a satisfied owner.



**Hyde Marine Technology COMPANY**  
 Hyde Marine Technology  
 2000 McClaren Woods Drive  
 Coraopolis, PA 15108  
 Phone: +1 (724) 724-7001  
 Fax: +1 (724) 724-7002  
 Service@HydeM.com  
 Parts@HydeM.com  
 TechnicalSupport@HydeM.com  
 www.hydemarine.com

V-2015  
 HAN 1

[Signature]  
 Hyde Field Service Engineer Signature

Customer signature indicates acceptance and receipt of this report.

